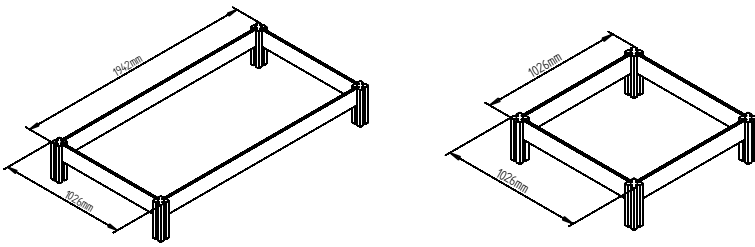


VEG BEDS

VB189 (VEG BED 180x90cm) VB99 (VEG BED 90x90cm)

Issue 0109



IMPORTANT :
ASSEMBLY OF THIS
PRODUCT REQUIRES
ONE PERSON

REQUIRED TOOLS : (NOT SUPPLIED)



DRILL



TAPE MEASURE



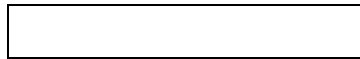
POZI DRIVE SCREWDRIVER



SPIRIT LEVEL

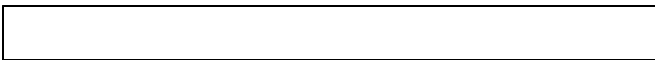


SHOULD YOU REQUIRE ANY ADDITIONAL GUIDANCE WITH THE
ASSEMBLY OF YOUR SHED PLEASE CONTACT OUR TECHNICAL HELP LINE
ON 0844 248 9853



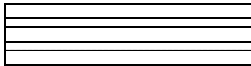
137160912PTR
(137 x 16 x 912mm) Small Board

QTY
VB99 x 4
VB189 x 2



137161828PTR
(137 x 16 x 1828mm) Large Board

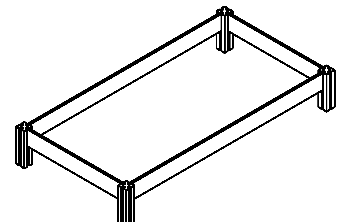
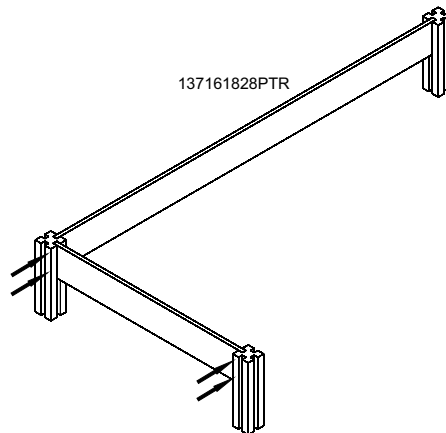
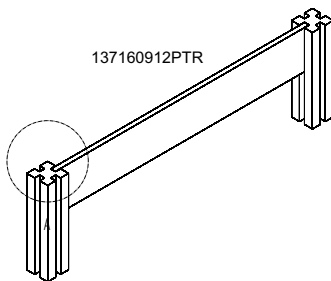
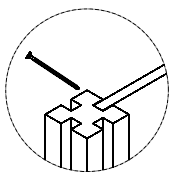
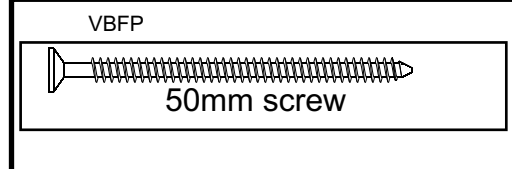
QTY
VB189 x 2



75750300SPTR
75 x 75 x 300mm) Post



QTY 4



Place the small board into the recesses of two posts. Make sure the board is flush with the top and secure in place by screwing through the post into the board using 2x50mm screws for each end.

Repeat the same step for each board.

Once the bed is constructed dig four holes and place the posts so that the bottom of the boards are on the ground.